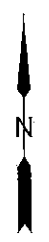


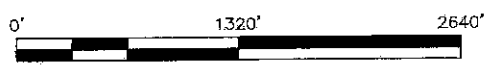
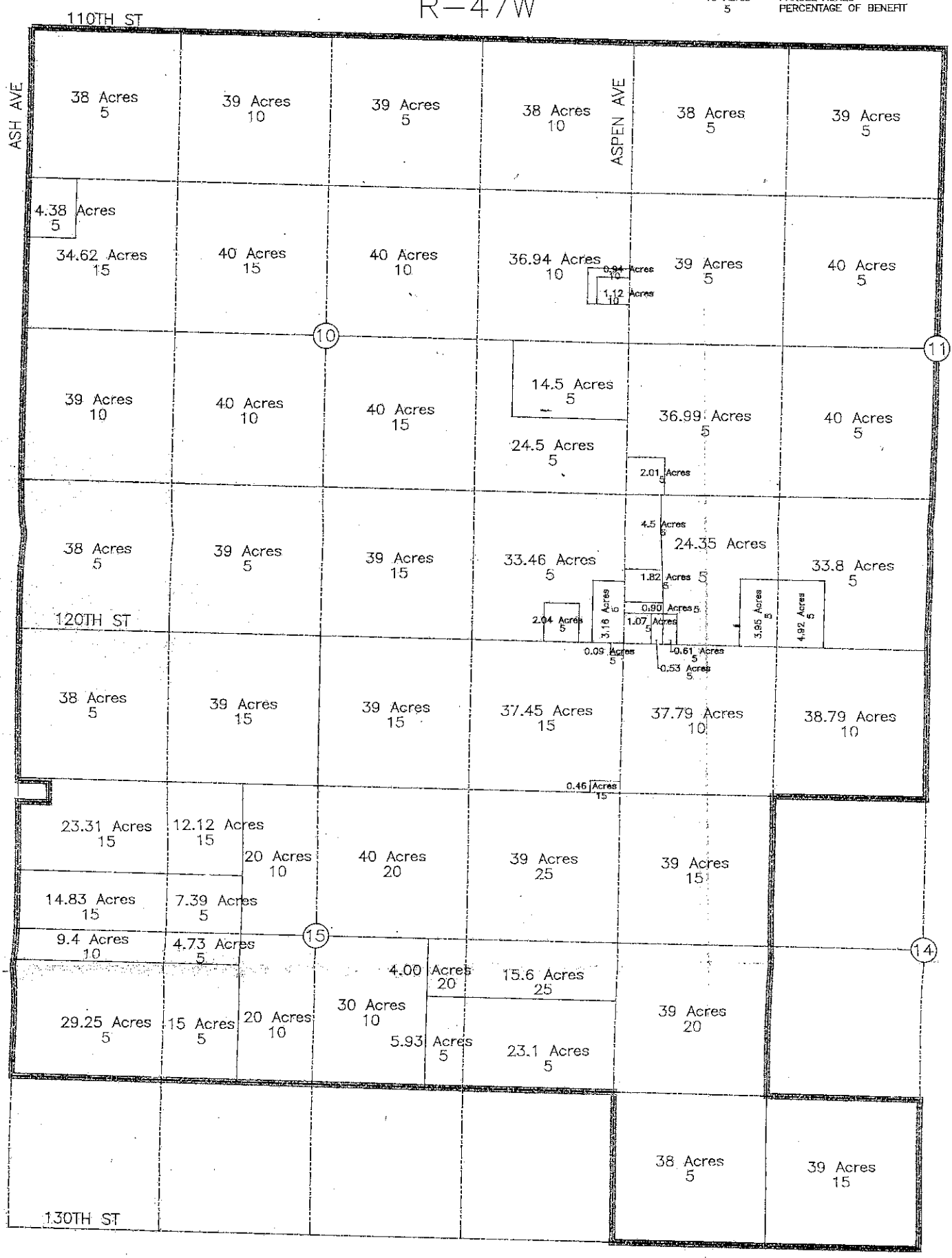
enproquest
 910 7TH STREET, OMAHA, IOWA 58100
 472 423 5151 4712 423 5152 4712 423 5153 4712 423 5154 4712 423 5155 4712 423 5156 4712 423 5157 4712 423 5158 4712 423 5159 4712 423 5160 4712 423 5161 4712 423 5162 4712 423 5163 4712 423 5164 4712 423 5165 4712 423 5166 4712 423 5167 4712 423 5168 4712 423 5169 4712 423 5170 4712 423 5171 4712 423 5172 4712 423 5173 4712 423 5174 4712 423 5175 4712 423 5176 4712 423 5177 4712 423 5178 4712 423 5179 4712 423 5180 4712 423 5181 4712 423 5182 4712 423 5183 4712 423 5184 4712 423 5185 4712 423 5186 4712 423 5187 4712 423 5188 4712 423 5189 4712 423 5190 4712 423 5191 4712 423 5192 4712 423 5193 4712 423 5194 4712 423 5195 4712 423 5196 4712 423 5197 4712 423 5198 4712 423 5199 4712 423 5200

ASSESSMENT PLAT FOR PROPOSED ANNEXED PARCELS McCANDLESS INTER-COUNTY DRAINAGE DISTRICT MONONA COUNTY, IOWA 2018



LEGEND
 ——— McCANDLESS ASSESSMENT BOUNDARY
 40 Acres 5 PARCEL ACRES
 PERCENTAGE OF BENEFIT

R-47W



SE PROJECT NO. 70917-9 DATE: 02/18 DRAWN BY: THK REVIEWED BY: PEM APPROVED BY: PEM CLIENT: McCANDLESS INTERCOUNTY D.O. DESCRIPTION: ASSESSMENT PLAT SHEET 1/1

T-85N

ASH AVE

ASPEN AVE

110TH ST

120TH ST

130TH ST